

# Western Interiors

MARCH/APRIL 2006

## AND DESIGN

# 9 Great Kitchen Designs!

**San Francisco**  
Wyoming  
**Las Vegas**  
Seattle  
**Los Angeles**

**Gardens**  
Cultivating  
Native  
Plants

**California Wine Retreat** Hip Door Hardware  
Montana River Ranch **35 New Floor Ideas**





**UNDER**  
the **TUSCAN SUN**

**A MEDITERRANEAN  
INFLUENCE GOVERNS  
A CALIFORNIA HOUSE  
BY BRAYTON HUGHES  
ARCHITECTS AND  
INTERIOR DESIGNER  
MARTHA ANGUS**



photography by Matthew Millman  
text by Chase Reynolds Ewald







**previous pages, left:** Drawing on Italian and Provençal elements, BraytonHughes Architectural Studio and designer Martha Angus created a vineyard estate in California's Silicon Valley. "The client was interested in a home with the character of a traditional Mediterranean villa," explains architect Stanford Hughes. **previous pages, right:** In the wife's study, Angus hung a 1940s French gilt sunburst mirror above a custom sycamore desk, which is paired with a leopard-print-covered carved chair. **left:** A carpet from Mansour in Los Angeles centers the living room. "Wonderful works of art and fine antiques don't have to keep a room from being comfortable and inviting," says Angus. A Wayne Thiebaud piece hangs above the fireplace, which is flanked by Jean-Michel Frank armchairs covered in a Clarence House damask. **opposite:** An antique gilded lyre-base card table and Russian armchairs sit in a living room alcove.

## **SILICON VALLEY** may be the epicenter of California's technology industry, but in one bucolic town,

**high-tech success enjoys a laid-back lifestyle.** Nestled against the coastal hills, which act as a barricade to ocean fog, and surrounded by clusters of evergreen forests, the town offers privacy for a family estate designed by BraytonHughes Architectural Studio of San Francisco and designer Martha Angus of San Francisco, New York and St. Helena, California. "The previous home on the same spot was a ranch house that had no connection to the landscape," explains architect Stanford Hughes. "The chardonnay vineyard was here; it had a creek in back and hills all around. Our client said, 'How can we experience this incredible landscape in all its different dimensions?'"

The architect and designer spent four years creating a residence that is as much about outdoor space as indoor. "The husband loved Mediterranean architecture, and his wife had lived in Italy," Hughes notes. "We brought in Italian and Provençal elements, but we didn't want to make it too literal." The roof of the house is overlaid with antique tiles from Provence, and the facade, accented with Carmel Valley stone and copper details, is punctuated by arches and custom mahogany windows, most of which also function as doors. Local planning regulations and zoning laws imposed tight parameters on the project. "An important factor in the design was the decision not to spread out our allotted six thousand square feet over one level," explains Hughes. "The client and I climbed up on the roof of the existing house and saw that it was really fantastic to be able to look out over the vineyard."

Designer Martha Angus—who worked with Naomi Leff in New York as well as for clients such as Ralph Lauren and Estée Lauder—actually started out as a painter and brought her fine-arts background to bear on the project. "Sometimes it's an advantage to come to interior design with a fresh point of view," she says. Most of the rooms were designed around the carpets,









**above:** "Because of the mild climate, a good part of the planning of the house involved creating outdoor rooms that are connected to indoor rooms," says Hughes. For the entry portico, Angus designed a bronze settee to complement Michael Taylor metal klismos chairs. **above right:** "We used monochromatic materials such as silk satin draperies and an Oushak carpet to highlight the architecture of the room," notes Angus of the dining room. A custom table is surrounded by Quatrain chairs upholstered in Fortuny fabric; the Stellare chandelier is by Donghia. **opposite:** A Russian chair from Galerie Golovanoff in Paris, a desk lamp from Soane in London and a leather armchair from Rose Tarlow are some of the furnishings that fill the library. Honduran mahogany was used for the casework.

which the clients and Angus selected at Mansour in Los Angeles. "For the dining room we chose an antique Oushak carpet that is very quiet," Angus says. "With the Douglas fir ceiling, large windows and built-ins, we decided to keep it understated." The formal living room also has "extremely strong architecture, with medium-tone ceilings and floors, a huge limestone fireplace and a large arched window overlooking the pool," she notes. "We did it as simply as possible because the room is so strong on its own."

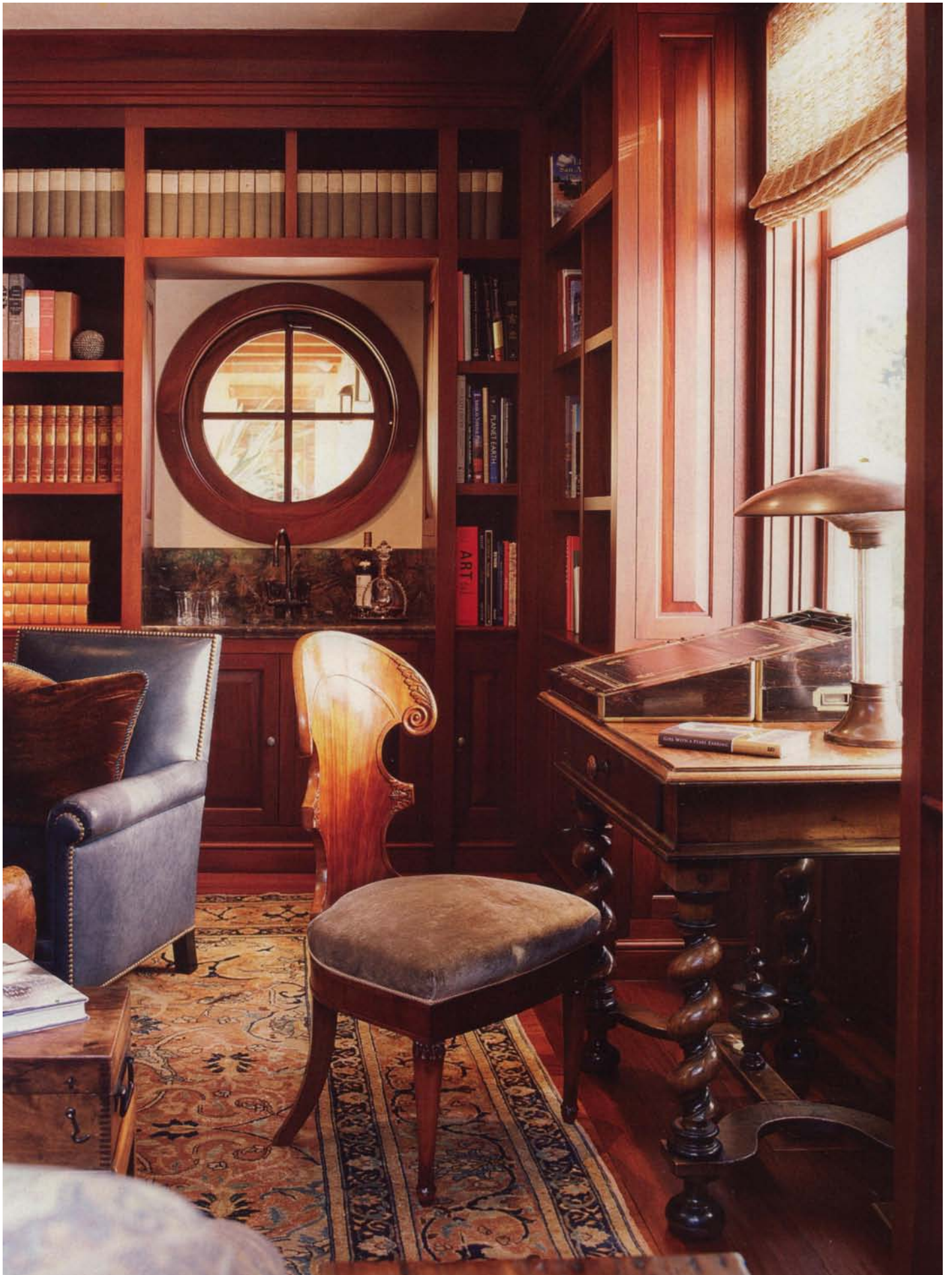
"The client is an electrical engineer and very creative," says Hughes. "The builder, Ron Magrin of Valley Building Enterprises, was very hands-on, very much a craftsman in the old master-builder tradition." In the library, one section of the bookcase swings open to reveal a hidden staircase leading down to the wine cellar. The kitchen flows from a seating area, anchored by an enameled lava-stone table, through the central open cooking area, with its copper pots and butcher-block island, to an inviting family room with a fireplace.

The family's bedrooms occupy the upper level, characterized by pastoral views and private balconies. An office has windows on three sides and overlooks the vineyard; its enclosed deck houses a telescope and connects to the long, open porch. The wife's study is given visual punch by a carved chair upholstered in a silk-velvet leopard print, a sycamore desk, a silver tree-trunk table lamp from London and a 1940s sunburst French gilt mirror. Such surprises abound.

Just as the house is defined by its easy flow from indoors to outdoors, the property is defined by the harmonious relationship between buildings. The outdoor space boasts a series of small gardens landscaped with olive trees, lavender and roses. The long rectangular swimming pool with a spa and waterfall at its far end sits adjacent to the pool house, which cleverly combines a changing area, guest suite and exercise studio.

"When I came to San Francisco, I felt the people there respected traditional architecture and interior design but weren't slaves to it," reflects Martha Angus. "In this project, our clients were looking for European things, but they also wanted things that were dog-friendly and kid-friendly." In fact, alongside the elegant pool and spa is a fire pit where roasted marshmallows might be served with a crisp chardonnay. ➤











**opposite:** Angus designed oak-framed headboards with Donghia raffia insets for the pool-house guest suite. Vellum lamps and a chartreuse-leather bench from Mattaliano accessorize the space, while Donghia mango-colored faux-silk draperies add warmth. A Tibetan jute carpet from Stark completes the room. **top right:** "The intimate space of the master bedroom is dressed in shades of soft green—a perfect reflection of the vineyards below," says Angus. Scalamandré fabric was used on Rose Tarlow chairs and for the draperies. **bottom right:** A copper Clothilde bathtub from Waterworks is set in an alcove in the master bath. Waterworks fixtures and sconces from Stephen McKay accent the space. A round window provides a bit of "architectural punctuation, like looking through the eye of a telescope," according to Hughes.







**above:** "An open court with beams that integrate lighting and heating gives the outdoor area indoor comforts," says Hughes. "For the outdoor living room we designed a Baumannière limestone fireplace." Sutherland chairs and an elliptical bronze table create a sitting area. A custom teak table with McGuire chairs is used for dining. **right:** "The guesthouse also functions as a pool house and includes changing rooms, an exercise studio, a kitchen and a guest room," explains Hughes. Sutherland chaises and a Wicker Works dining table and chairs border the pool. Michael Taylor wood klismos chairs are coupled with a Sue Fisher King lava-stone table (far left).





